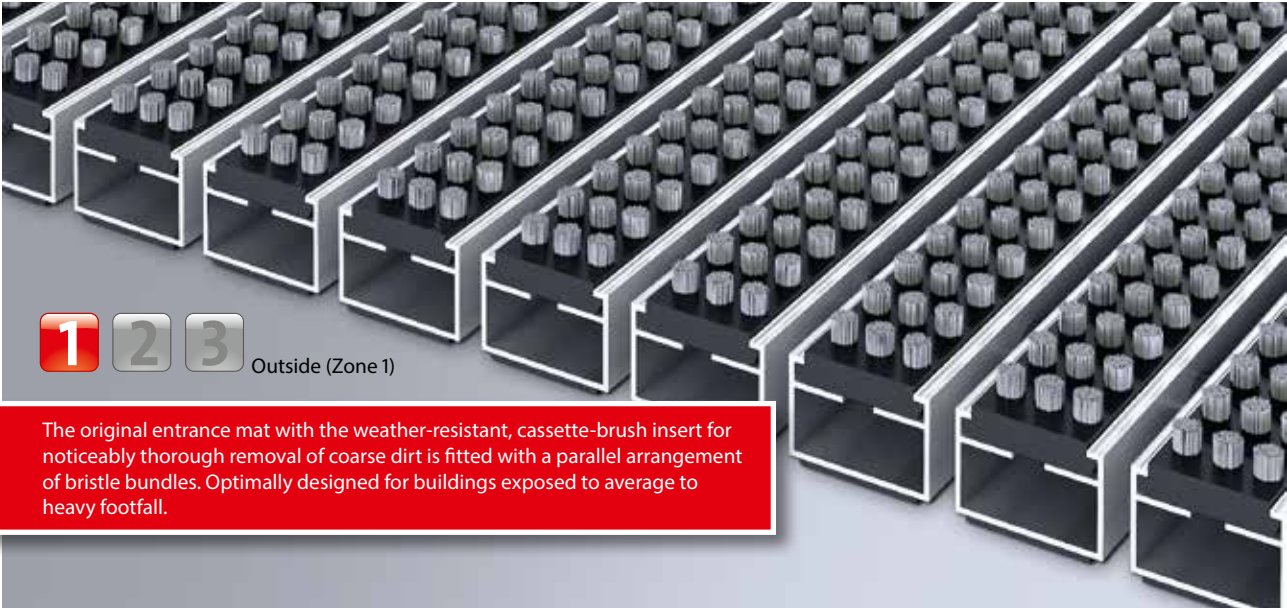
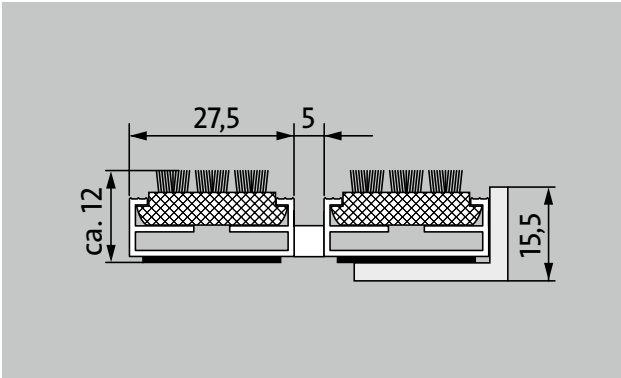


Model 512 CB



1 **2** **3** Outside (Zone 1)

The original entrance mat with the weather-resistant, cassette-brush insert for noticeably thorough removal of coarse dirt is fitted with a parallel arrangement of bristle bundles. Optimally designed for buildings exposed to average to heavy footfall.



Description

Rollable and hard-wearing original entrance mat with standard insert for supported installation options. Customisable widths and walking depths available without a compensation profile. Available in any geometric shape.



Outside (Zone 1)



Street dust, hair, sand, ash, textile fibres, small leaves and twigs, loose chippings, coarse sand, small gravel particles



Street dust, hair, sand, ash, textile fibres, small leaves and twigs, etc.



R 13 slip resistance as per DIN 51130



Model 512 CB

| | |
|--|---|
| Approx. height (mm) | 12 |
| Note on height | The insert can actually be approx. 2 mm higher due to the brushes. |
| Roll-over and drive-over capability: | <p>Prams</p> <p>Sack-/hand truck</p> <p>Wheelchairs</p> <p>Please note: the bristles in the cassette brush can lose their resilience if they are frequently overrolled.</p> |
| Standard profile clearance approx. (mm) | 5 mm, rubber spacers |
| Automatic door systems | Profile clearance of 3 mm available as an option for revolving door drives, in accordance with EN 16005 |
| Connection | Plastic-coated stainless steel cable |
| Max. width/profile length for individual section (mm): | 3000 |
| Profile width (mm) | 27.5 |
| Depth/walking depth for individual section (mm): | 1500 |
| Weight (kg/m²) | 13.6 |
| Mat divisions as per factory standards or customer specifications | from a profile length of 3000 mm or a maximum mat weight of 25 kg |
| Support chassis | Made using rigid aluminium with sound absorbing insulation on the underside |
| Tread surface | Recessed, robust, weather-proof cassette sections, equipped with brush bundles arranged parallel to one another. Actual mat height: + 1 to 2 mm. |
| Slip resistance | R 13 slip resistance as per DIN 51130 |
| Flammability | Complete mat system (for bristle bundles in black) available on request (surcharge applicable) with fire classification Cfl-s1 according to EN 13501. |

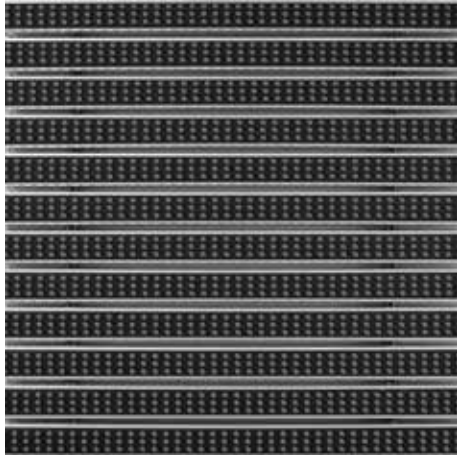
| Accessories |
|--|
| emco installation frame 500: 500-15 AL Aluminium |
| emco installation frame 500: 500-15 CN Chrome-nickel steel (V2A) |
| emco ramp edge: A12 Aluminium |
| emco cover strip: C12 Chrome-nickel steel (V2A) |
| emco INOX®: LINEO 12 Chrome-nickel steel (V2A) |
| Rubber underlay 1 mm: GU 1 |
| Rubber underlay 3 mm: GU 3 |
| Rubber underlay 5 mm: GU 5 |
| Mat joining brackets: MV Supplied as standard with mats in several parts |

| Suitable for: |
|----------------------------|
| Residential and care homes |
| medical practice |
| Family home |
| Apartment building |
| Sports hall |

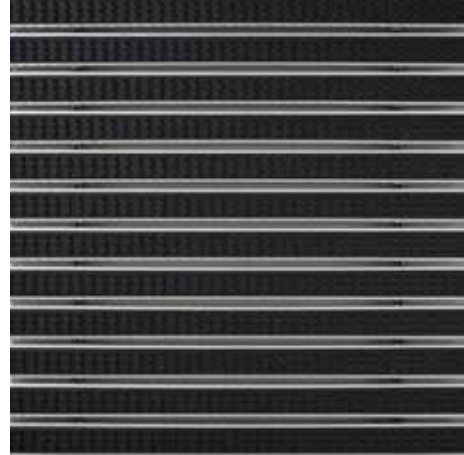
| Service and services |
|--|
| Construction site advice |
| Dimensioning |
| Measured using laser measuring device on site. |
| Installation service |
| Fitting and installation service |
| Repairs |
| The product can be disposed of or recycled in an environmentally friendly way. |

Model 512 CB

Colours



grey



black

Subject to technical modifications

emco Bautechnik GmbH · Breslauer Straße 34 - 38 · D-49808 Lingen (Ems)
· Germany · Phone: +49 (0) 591/9140-500 · Fax: +49 (0) 591/9140-852 · Email:
bau@emco.de · www.emco-bau.com

EMCO